

## GUIDANCE FOR IDENTIFYING VETERAN TREES

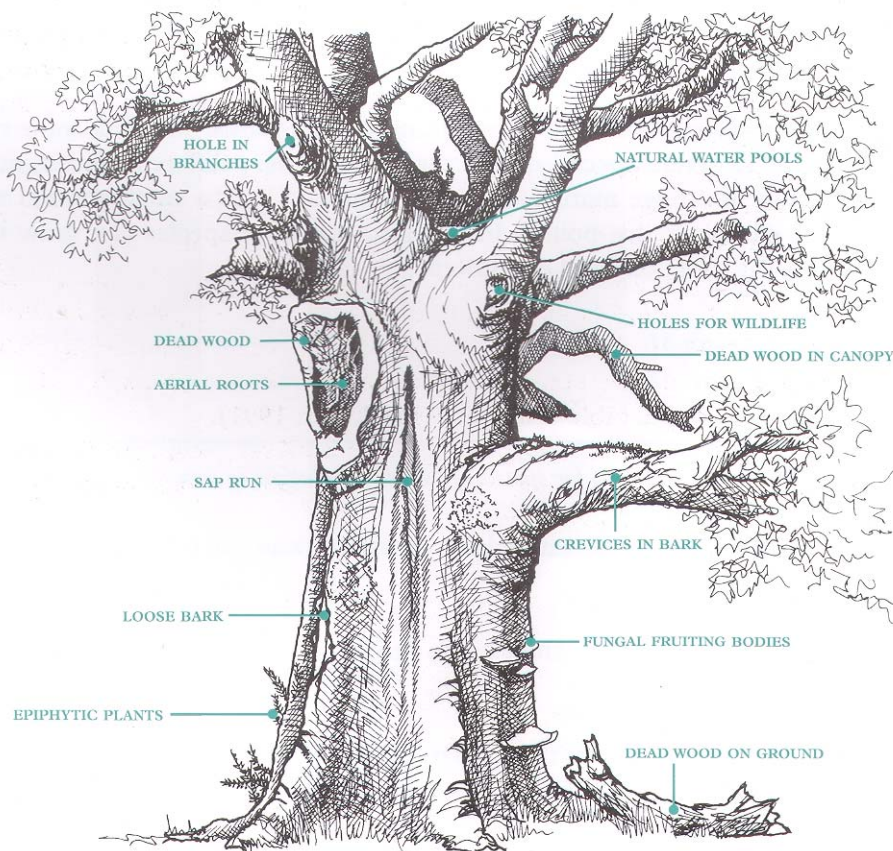
**BS5837:2005** defines veteran trees as follows:

“Trees that, by recognized criteria, show features of biological, cultural or aesthetic value that are characteristic of, but not exclusive to, individuals surviving beyond the typical age range for the species concerned”

The criteria referred to are set out below.

**Illustration from ‘Veteran Trees: A Guide to Good Management’ (Helen Read, EN 2000)**

Figure 3\*. *Diagram to show the features characteristic of a veteran tree.*



**NB** Not all features listed above have to be present simultaneously for a tree to qualify.

Other indicators given by Read are:

- **Girth/diameter large for species**
- **High number of interdependent wildlife species, including invertebrates**
- **An ‘old look’**
- **Pollard form or other indications of historic management techniques**
- **Occupying a prominent position in the landscape, or standing on a boundary**
- **Have a known cultural or historic value**